



SPACIOUS HOME IN THE INNER SOUTH

CLARANCE PARK VACANCY



4x Rooms Available



1x Other Tenants



2x Bathrooms



Welcome to your new home!

Discover an exceptional Supported Independent Living (SIL) housing option tailored for individuals seeking independence with the assurance of support.

We are delighted to announce the availability of a charming and spacious four-bedroom house in our SIL community.

This purpose-built home is in a quiet, leafy suburb, close to the city, beach, shops, and medical centres, and is available for rent. Two bedrooms are available for adult females to share.

orana
Creating Opportunities



SUPPORT BENEFITS.

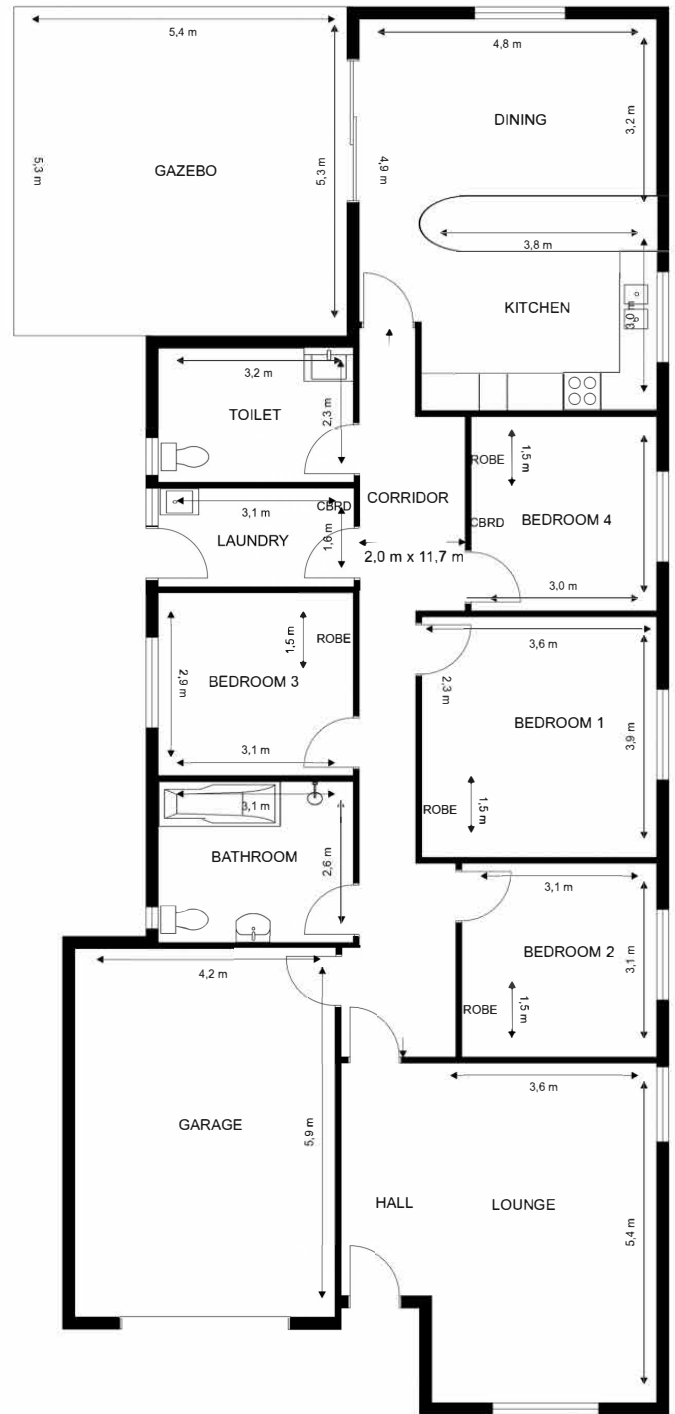
- **24/7 Support:** Staff is available around the clock to provide personalised support.
- **Engaging Activities:** Participate in a variety of community activities designed to promote social interaction and personal development.
- **Accessible Facilities:** Our community is designed with accessibility in mind, ensuring a safe and accommodating environment for all tenants.

PROPERTY FEATURES.

- **Good Sized Bedroom/s:** Bedroom offers ample space and natural light, providing a comfortable and inviting atmosphere. The bedroom on offer is not furnished.
- **Open Plan Living Area:** The living room seamlessly connects with the dining area, creating a versatile space for relaxation and socialising.
- **Fully Equipped Kitchen:** Includes appliances, plenty of storage, and a user-friendly layout, perfect for preparing meals with ease.
- **Outdoor Space:** Enjoy the communal recreational space, ideal for outdoor activities and enjoying the fresh air.

PROPERTY FEATURES.

- Tenant must be 18 years or older, and must have funding in their NDIS plan or funding from an alternative source.
- Tenant will need to sign a tenancy agreement, pay rent and contribute to household expenses such as groceries and utilities



CONTACT US.



Call our team on
08 8375 2000 to arrange
a viewing of this
Supported Independent
Living vacancy.

Please note, furniture for staging purposes only.
Tenants will be required to supply their own furniture.